

About Let's Ride Corral Club

This is your chance to own and care for the horse of your dreams! Select your horse, choose your riding outfits and even decorate your horse for the rodeo events. Ride through the Pasture to become more familiar with your horse then go to the Practice Corral to perfect your riding skills before you head to the Competitions to work your way up to National Champion!

Getting Started

After the title screen the main menu appears. Select **NEW GAME** from the main menu. From here you can choose your outfit go to the stable or begin riding by clicking on the **LET'S RIDE** button which lets you select the Practice Corral, Competition or Pasture.

Choose Your Outfit

From the main menu click on **NEW GAME** and now you can decide what you want to wear. Click on the yellow arrow next to any of the item choices to scroll through samples. You can choose your hat, hair color, shirt, pants, and boots and even select a name for your rider. As you click through your choices each item will be displayed on your rider so you can mix and match and find just the right outfit. At any time in the game if you want to change your outfit just click the **BACK** button and click on **GO TO STABLES** and choose your clothes from the menu as you did before. To jump right back into game play click **LET'S RIDE**.

Choose Your Horse

You can reach the stables from the main menu once you click on **NEW GAME** then click on **HORSE STABLE**. Here you can pick your horse selecting their coat, mane, saddle and color saddle pad. You can even name your horse. The selection menu works exactly as the previous menu for choosing your clothes – just click on the yellow arrow next to any of the item choices to scroll through samples. As you click through your choices the horse will change to match your selection. At any time in the game you can change your horse just click the **BACK** button and click on **GO TO STABLES** and then click **HORSE STABLES**. To jump right back into game play click on **LET'S RIDE**.

Installing Let's Ride Corral Club

Insert the game CD into your CD-ROM drive. If installation does not start automatically, follow these steps:

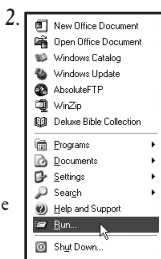
1. Click on START.



2. Click on RUN.

3. Type D:\SETUP.EXE
(where "D" is the letter
of your CD-ROM drive).

Windows® 2000/XP User's Note: Let's Ride Corral Club must be installed from a user account with Administrator privileges.



During installation, you may be prompted to install DirectX® 9.0. Let's Ride Corral Club requires DirectX 9.0 or higher. If you do not already have DirectX 9.0 or higher installed, follow the on-screen prompts to complete the DirectX installation.

Starting Let's Ride Corral Club

Double click on the Let's Ride Corral Club icon on your desktop or click C:\Program Files\ValuSoft\Let's Ride Corral Club.

Technical Support

Questions or problems? We're here to help.
For updates & answers to frequently asked questions,
visit our website at: www.valusoft.com, e-mail us at:
support@valusoft.com or write us at:
ValuSoft, 711 South Pine Street, Waconia, MN 55387

Attention: When contacting technical support, please make
sure that your e-mail security settings and anti-SPAM
software are set to allow e-mail from tech@valusoft.com.



Let's Ride!

TM

CORRAL CLUB



EVERYONE



CONTENT RATED BY
ESRB

Groom Your Horse

After a long day you can bring your horse back to the stables to groom and feed her. Click on the BACK button from any screen, click GO TO STABLES and then HORSE STABLES and finally click on GROOM HORSE. Here you can feed your horse apples and/or carrots, just click on one and bring it over to feed her. If your horse needs some special care you can click on the grooming brush and brush her – your horse will appreciate the attention especially after a long ride. Or you may not feel like riding today in which case you can just groom your horse by going to NEW GAME then click HORSE STABLE and GROOM HORSE.

Riding

Riding is what you really want to do. After the game loads and you have selected NEW GAME, you can access one of three venues from any menu in the game by clicking on the pink LET'S RIDE button. This will give you three options:

1. Practice – The Practice Corral is the perfect place to improve your barrel racing skills and prepare to compete. Here you run the barrel race practicing your tight turns and improving your time against your last run. Red arrows flash on the ground showing you the race path. Hint: when going around those barrels slow to a trot by hitting the down arrow to slow the horse down as you go into the turn.
2. Competition – If you select the competition you should be ready to compete for the blue ribbons in a series of 8 qualifying barrel racing events that you will need to win in order to get to the grand finale which is The National Barrel Racing Championship. Before getting here you will need to win on the local, city, county, sectional and regional levels. This will take you to the State Barrel Racing Qualifying race. You qualify here for the next level which is the State Barrel Racing Championship which allows you to compete in the National Racing Qualifying race and on to the final race The National Barrel Racing Championship.

3. Pasture – If you want to ride without having to qualify for the championship, the pasture is a great place to ride. Here you will have 7 courses to run, all with varying configurations. You start with traditional barrel racing, then on to Slalom 1, Big T, Speed Barrels, Quadrangle, Slalom 2 and finally The Big One. Once you have gone through each of these one time your personal times will be set and every time after you can ride to beat your personal best.

Controls

Press the UP ARROW to walk your horse. Press it a second time to trot & a third time to gallop.

Press the DOWN ARROW to slow your horse down.

(Use this arrow when turning in the barrel races to slow your horse to a trot for the tightest turn)

Press the RIGHT ARROW to turn your horse to the right.

Press the LEFT ARROW to turn your horse to the left.

Pressing F1 in any one of the three venues works as a toggle and will turn the directional arrows on the ground on or off.

Replay, Save, or Delete Your Game

For review you can replay how well you did on the course in both the Practice Corral and at all Competition levels by clicking the BACK button then clicking on the REPLAY button. This will replay your entire run so you can evaluate your form and improve your racing techniques. At any time in the game you can go back to the menu and review your runs on the course.

To save your times and come back later to continue the same game just click on SAVE GAME after you have completed a course. You can save up to six games. It is easy to delete old games, just click DELETE GAME and a menu will come up showing all your games saved to date, click on the one you want to delete and then click on YES.

Scrapbook

Once you have completed a course in either the Practice Corral or any of the competition levels your run will automatically be saved in the scrapbook. Every competition will be saved along with the corresponding certificate and ribbon depicting your time and placement in the competition. You can browse through your scrapbook looking at all of your awards by clicking on the yellow arrows at the bottom of the screen or print out each page by simply clicking on the PRINT button on the screen.

Quit the Game

Click the back button until you reach the main menu and then click on QUIT.

Troubleshooting

For optimal performance we recommend that you close any other applications that are running on your computer prior to playing Let's Ride Corral Club.

We strongly recommend that you obtain the latest DirectX compatible drivers for your video and sound cards. Using drivers that are not compatible with the latest version of DirectX can have unpredictable results. Updated drivers are typically available at no charge through your hardware manufacturer's website. Popular video chipset manufacturers include: ATI – www.ati.com , Intel – www.intel.com and Nvidia – www.nvidia.com For additional information on DirectX, please visit www.microsoft.com/directx/

Ensure that your computer meets the minimum system requirements. Let's Ride Corral Club requires Windows® 98/2000/Me/XP, Pentium® III 700 MHz or higher or 100% compatible, 128 MB RAM, 8x CD ROM drive, 500 MB disk space, 32 MB DirectX compatible video card, DirectX compatible sound card and DirectX version 9.0b or higher.