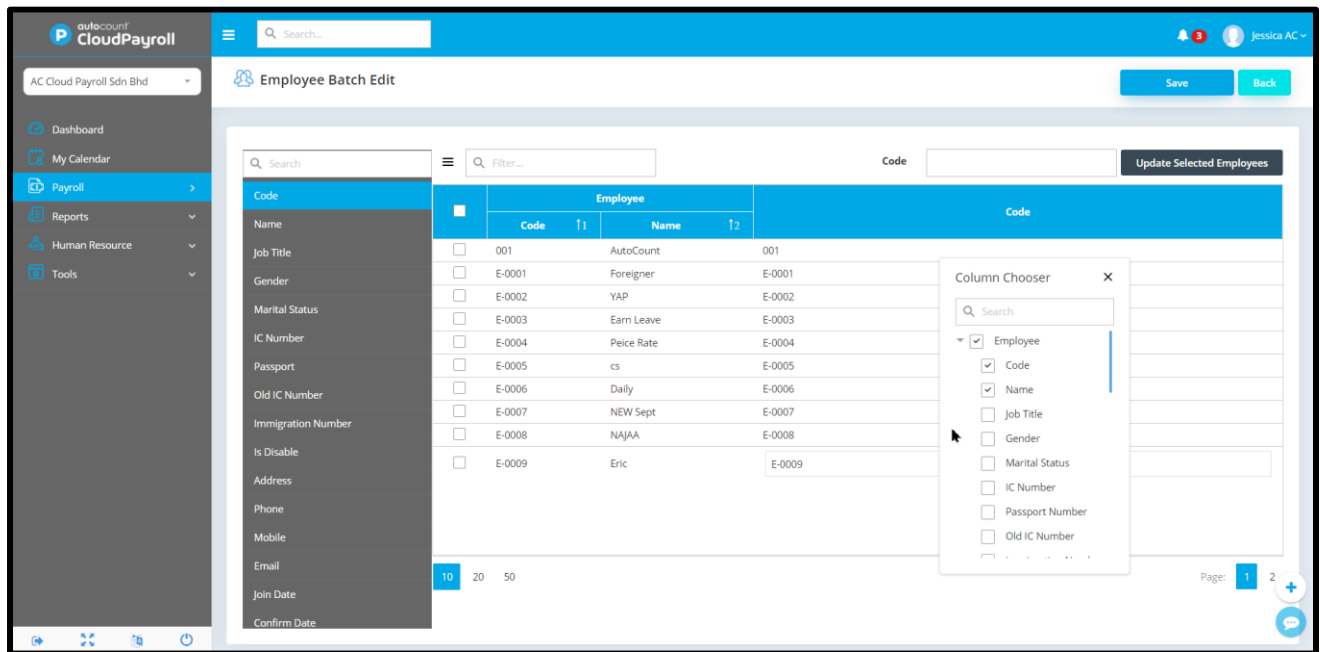


Release Note CP 1.0.14

New Features

1. Column chooser in Employee Batch Edit

Added column chooser feature in Employee’s Batch Edit, so that user may review on the information needed before proceeding for the batch update.



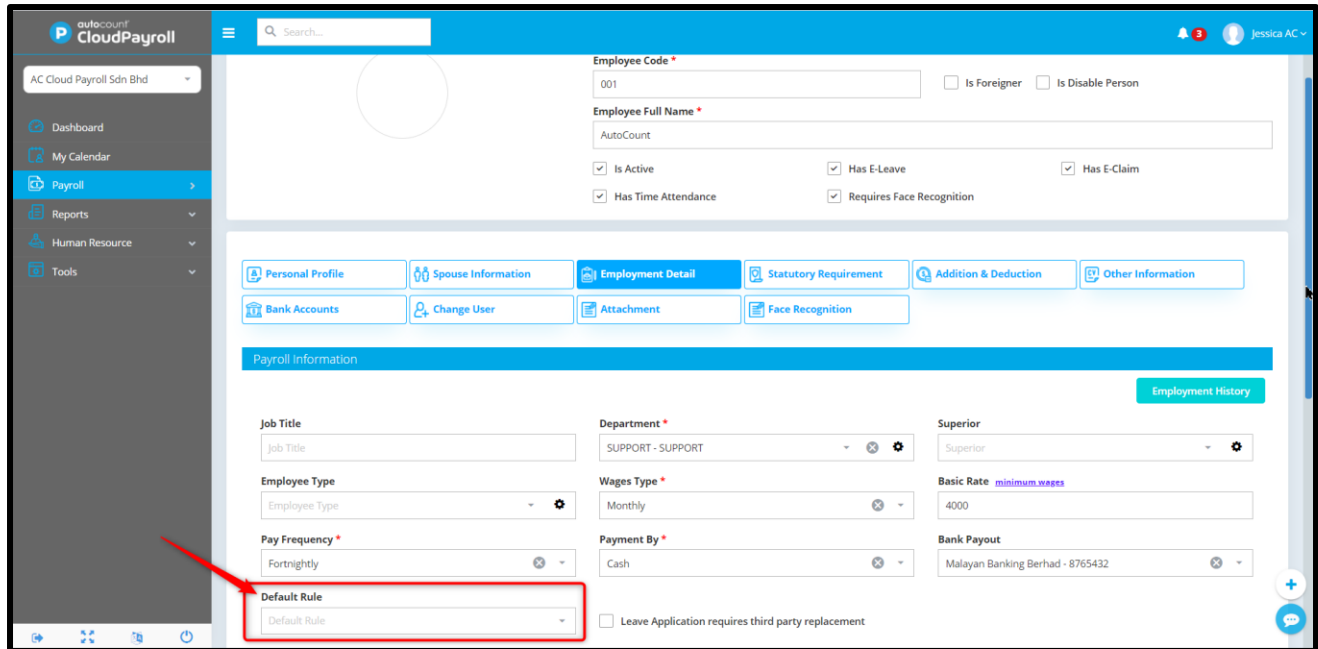
2. Show 1st approver remark to 2nd approver

For those companies with multi-level approval, the first approver now may pass some remark or extra information to second approver during approval process.

3. New TP3, CP21, CP22, CP22B form format for 2021 compliance

4. Set attendance rule to individual employee

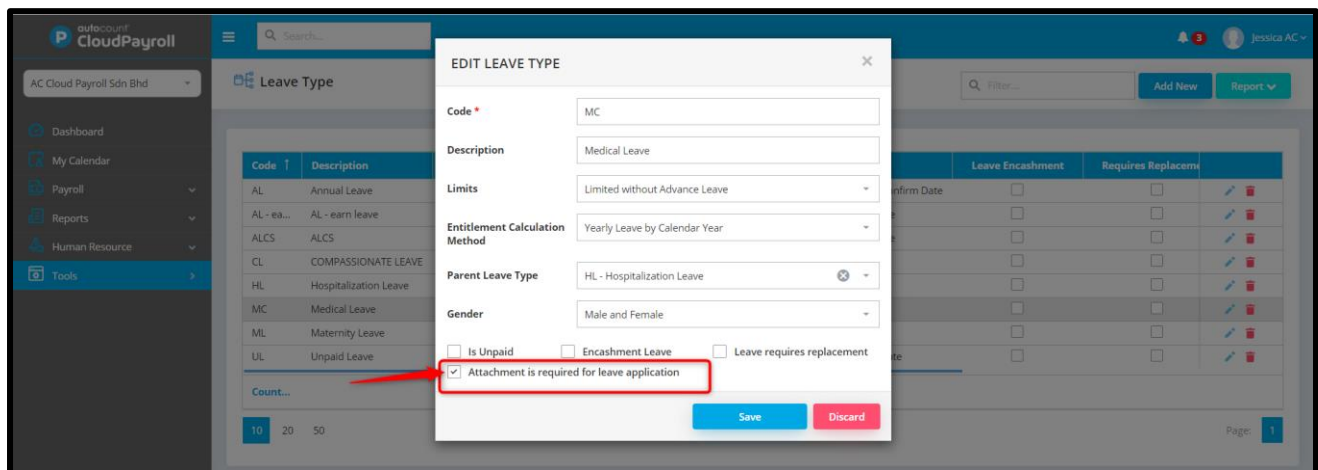
For those employees with special attendance rule, HR may now assign the attendance rule to individually at employee maintenance. E.g., Muslim need to go for Friday Prayer, so the rule for Friday Shift is 2 hour break time where the default rule for all other staff is only 1 hour break time.



Kindly go to Payroll > Employee Maintenance > Edit the employee and go to Employment Detail Tab.

5. Attachment is required for leave application

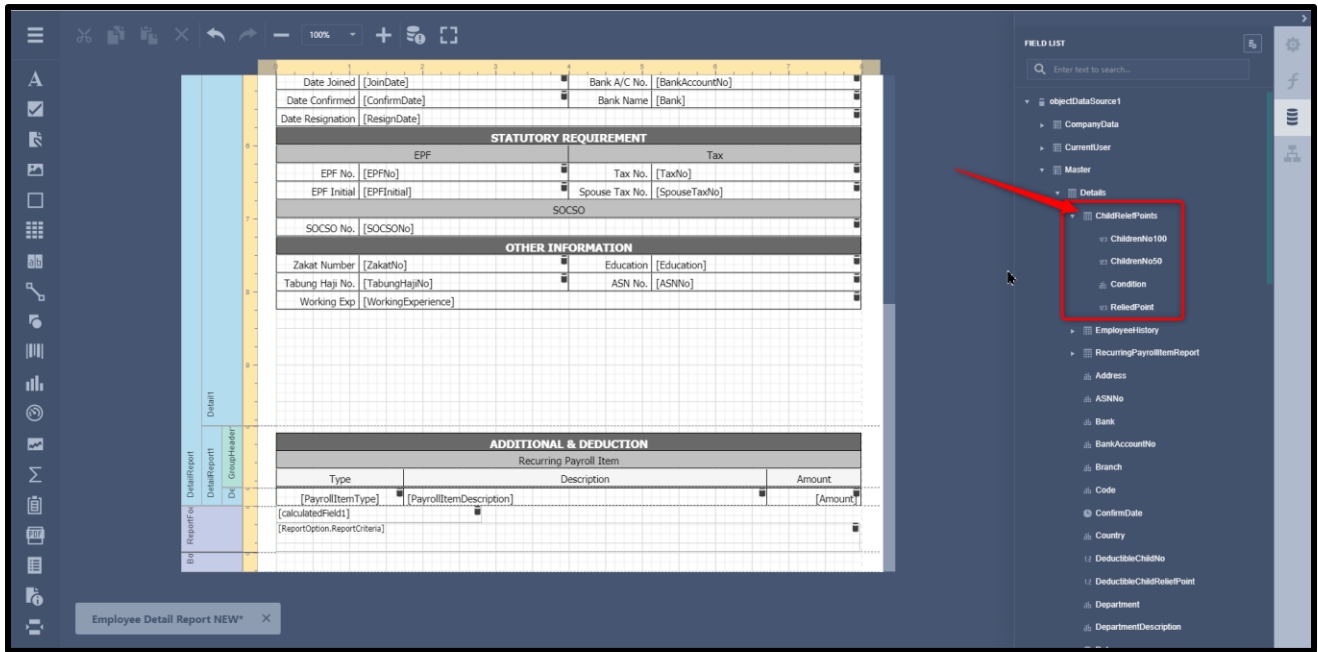
A new option available at the Leave Type maintenance for the HR to set attachment is required during leave application. E.g., Medical Leave need to turn on this option for employee to attach the medical slip together during leave application.



Kindly go to Tools > Leave Type > Edit the leave type and tick on the checkbox as per above.

6. Deductible child relief info in Employee Report

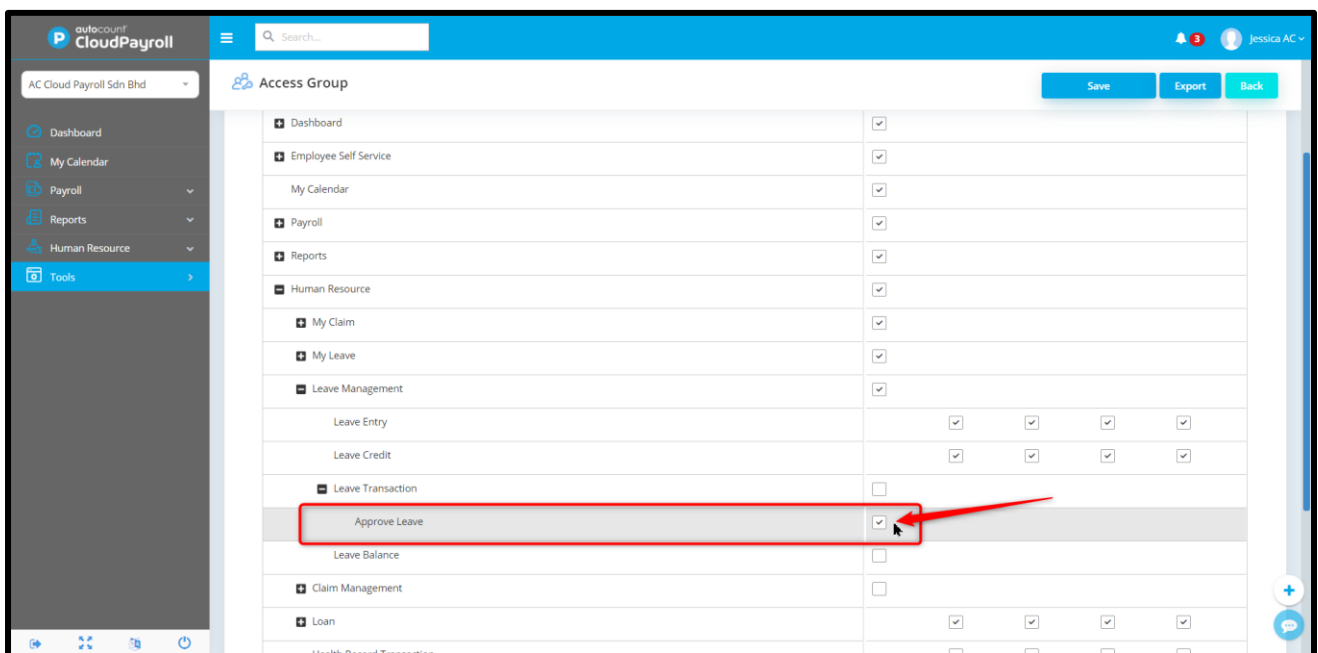
Added child relief information field in Employee Details Report.



Kindly go to Reports > Employee Report > Employee Detail Report.

7. Super approver for eLeave and eClaim

Introduce Super Approver for the eLeave and eClaim. Now you may assign authorize personnel to do the leave or claim approval on behalf of the approver which had set in the approval setting.



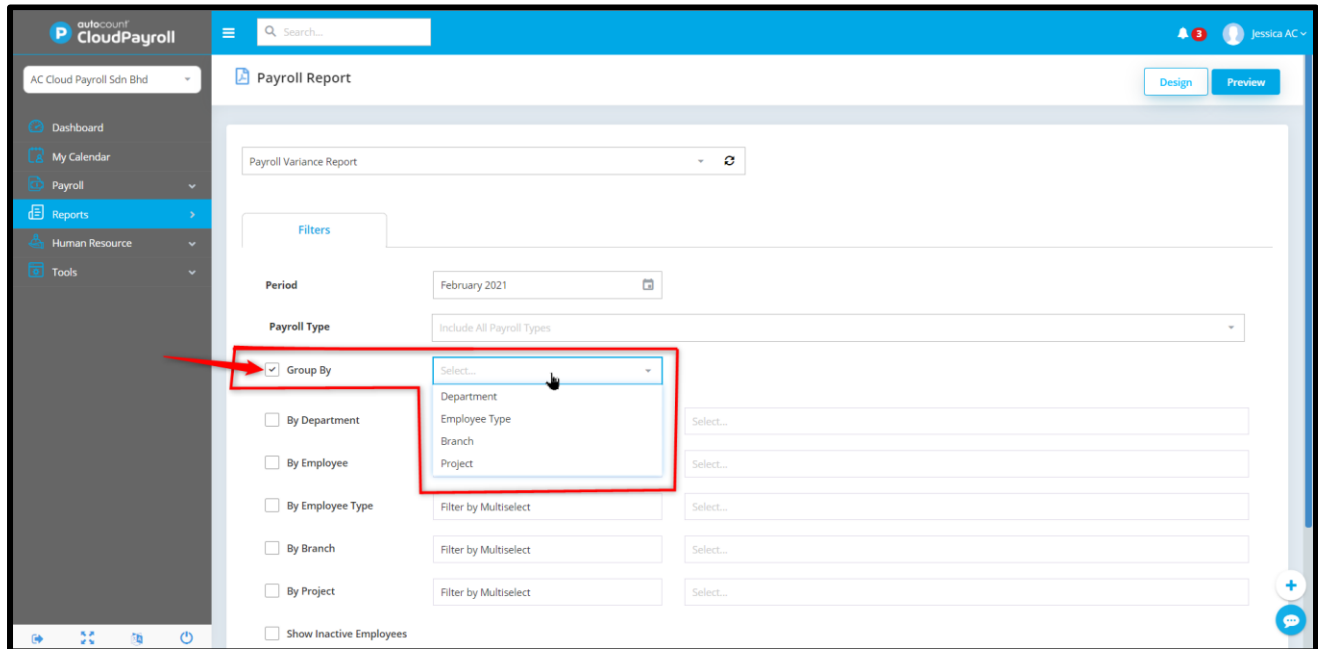
Kindly go to Tools > Access Group > Edit the access group and tick on the line showed above.

8. TA transaction modification history added into Audit Trail

Enhancement

1. New filter option for Payroll Variance Report

Added new filter option, Group By Department, Employee Type, Branch and Project for Payroll Variance Report.



Kindly go to Reports > Payroll Report and choose Payroll Variance Report.

2. Leave entry and leave credit employee group authorization

Employee Group Authorization in Leave Entry and Leave Credit Transaction.

3. Hide inactive employee in leave entry and leave credit

Inactive employee will not show in the listing when user key in Leave Entry and Leave Credit.

4. Show AM/PM rest day in shift schedule maintenance

Now system will show AM/PM rest day information in shift schedule maintenance just like the Calendar Maintenance.

5. Changes in Electronic File Payment

- a. Added new electronic bank payment file on EIS for CIMB bank
- b. New electronic bank payment for Maybank 2uBiz.
- c. New electronic bank payment for Hong Leong ConnectFirst

6. Enhanced Borang 8A

Show foreign worker's SOCSO number in Borang 8A

7. Increase of character limit for announcement to 1000 characters

The character limit for announcement had increased from 300 to 1000 characters.

Bugs Fixed

1. Fixed Adhoc UI to support low resolutions.
2. Fixed Year End Leave Credit Calculations.
3. Fixed CF Leave edit in Leave Transactions screen.

Prepared by Jessica

Last Modified 3rd March 2021