

FnB Release Note 5.0.29.162

Bug Fixes:

Description	
9395	Fix when reprint POS transaction, the receipt does not follow default printer.
9401	Fix Item Batch capture both uom during batch selection instead of sales uom only.
9410	Fix Payment Amt not equal to Net Total bug when payment if inclusive service charge and inclusive service tax.
9413	Fix Pos Posting journal entry not balance with full point payment made and rounding adjustment.

Enhancement:

ID	Description
9199	Support to key table no instead of selecting from floor plan.
9200	Support batch print at pos transaction viewer.
9404	Provide an option "Always follow Terminal Settings Service Charge %" at Table Design.
	Enhance and optimize synchronization.

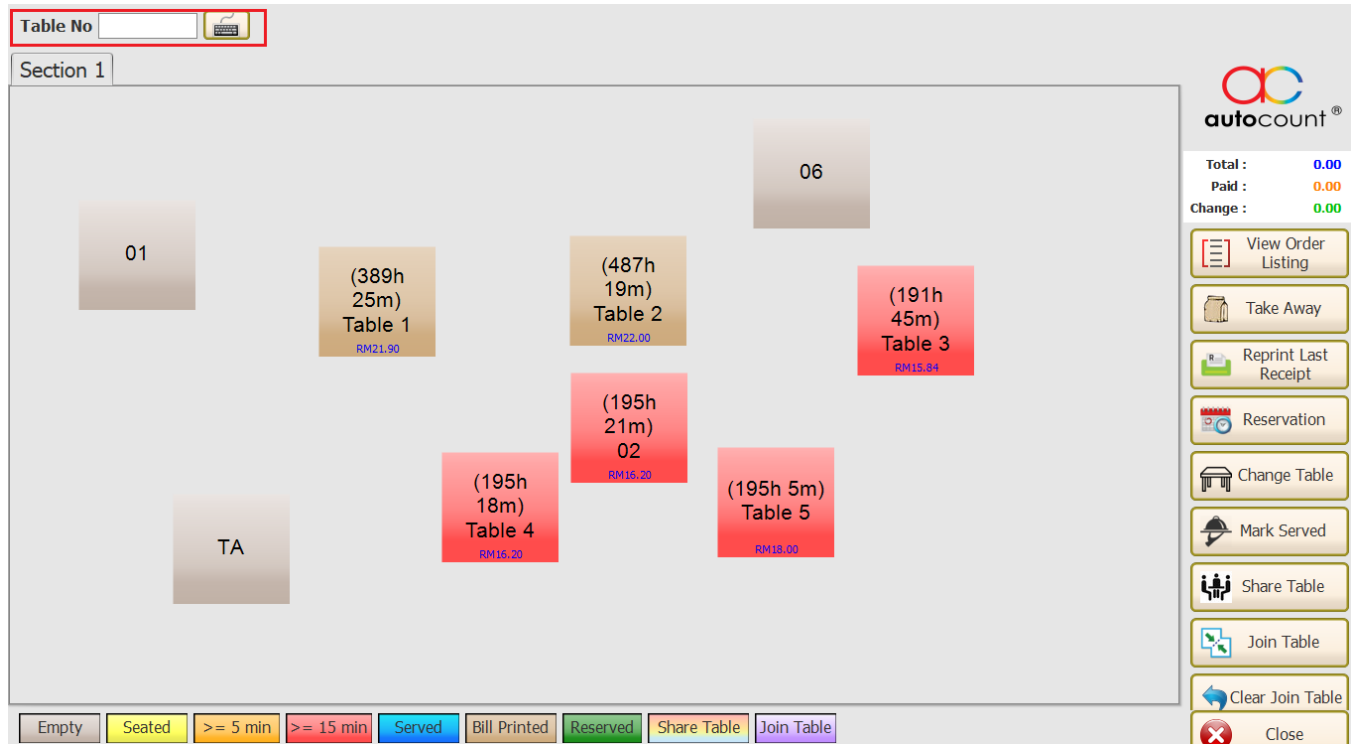
Document Prepared by Jacky

Last Modified 7th May 2021

Highlights of Changes in 5.0.29.162

ID: 9199 Support to key table no instead of selecting from floor plan.

User now can manually input the table no instead of searching if you have a lot of section. This to ensure that the staff that taking the order does not waste much time searching for the table.

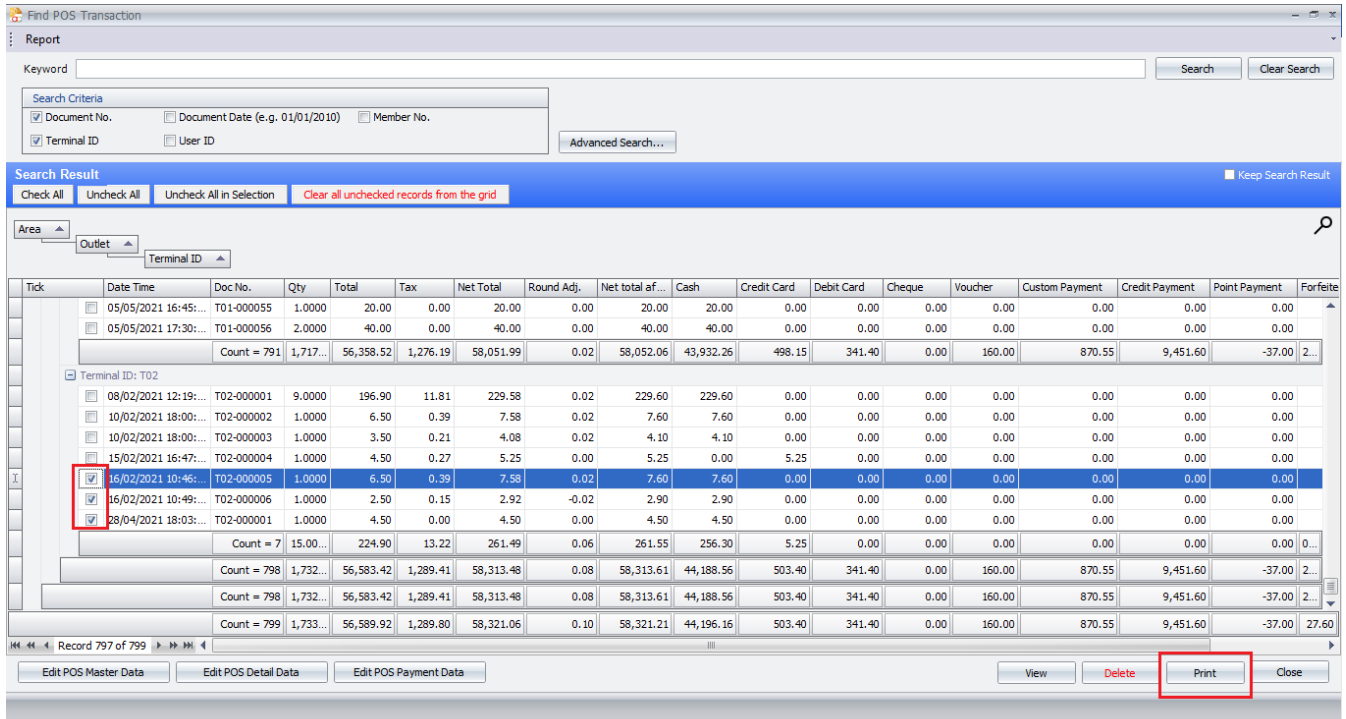


ID: 9200 Support batch print at pos transaction viewer.

Some of the user auditor may request receipt during their audit. User found it troublesome to reprint individual transaction every time they request for it. Therefore, we have added a batch print feature at pos transaction viewer to ease your trouble.

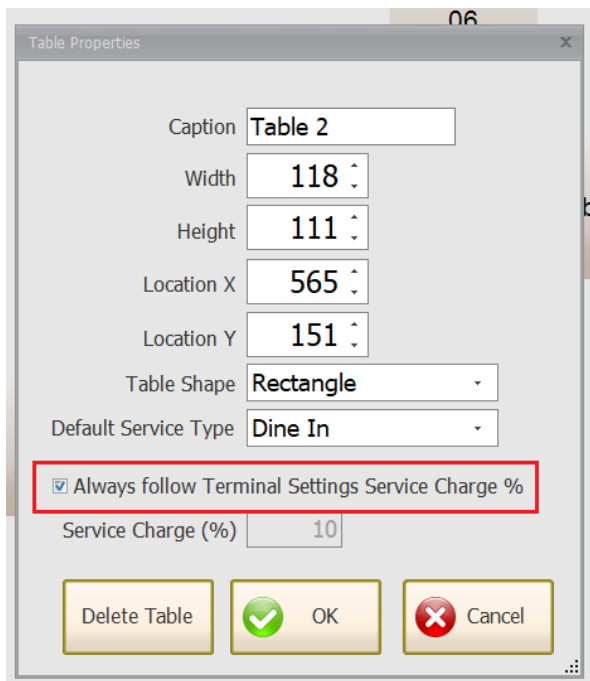
To batch print, navigate to Backend **Point Of Sales > Pos Transaction Viewer > Find**

Do your filtering and search then print. Also remember to check those boxes for batch print.



ID: 9404 Provide an option “Always follow Terminal Settings Service Charge %” at Table Design. Previous version, user must set 1 by 1 table if somehow user wish to change their service charges rate. Now with this option, user can just change the default service charge and all table will follow accordingly. Imagine editing for more than 30+ table.

To do so, go to **More Function > Settings > Table Design**. Right click on the table.



Enhance and optimize synchronization

1. Optimize speed sync and full sync speed.

The synchronization speed had been significantly improved.

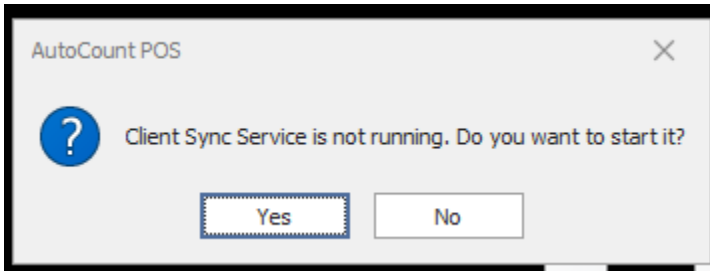
2. Optimize POS window services.

Instead of 2 services that control license and auto sync separately, we now only have 1 services that control both function.

Name	Description	Status	Startup Type	Log On As
ActiveX Installer (AxInstSV)	Provides User Account Control validation for the installation of ActiveX controls from the Int...		Manual	Local System
Adobe Acrobat Update Service	Adobe Acrobat Updater keeps your Adobe software up to date.	Running	Automatic	Local System
AFnB Client Sync	AutoCount POS Client Sync	Running	Automatic	Local System
Agent Activation Runtime_106ae0bf	Runtime for activating conversational agent applications		Manual	Local System
AllJoyn Router Service	Routes AllJoyn messages for the local AllJoyn clients. If this service is stopped the AllJoyn cli...		Manual (Trig...	Local Service
AnyDesk Service	AnyDesk support service.	Running	Automatic	Local System
APOS Client Sync	AutoCount POS Client Sync	Running	Automatic	Local System
APOS RestartSyncClient	APOS RestartSyncClient	Running	Automatic	Local System
APOS Server Sync - DEMO_BE	AutoCount POS Server Sync	Running	Automatic	Local System
APOS Server Sync - FABULUXE	AutoCount POS Server Sync	Running	Automatic	Local System
APOS Server Sync - FnBPOS_BE	AutoCount POS Server Sync	Running	Automatic	Local System
APOS Server Sync - GO_BE	AutoCount POS Server Sync	Running	Automatic	Local System
APOS Server Sync - POWERMAX_BE	AutoCount POS Server Sync	Running	Automatic	Local System
APOS Server Sync - SYL_FE	AutoCount POS Server Sync	Running	Automatic	Local System
APOS Server Sync - TESTUOM	AutoCount POS Server Sync	Running	Automatic	Local System
APOS Sync Client	AutoCount POS Sync Client	Running	Automatic	Local System
App Readiness	Gets apps ready for use the first time a user signs in to this PC and when adding new apps.		Manual	Local System
Application Host Helper Service	Provides administrative services for IIS, for example configuration history and Application P...	Running	Automatic	Local System
Application Identity	Determines and verifies the identity of an application. Disabling this service will prevent App...		Manual (Trig...	Local Service
Application Information	Facilitates the running of interactive applications with additional administrative privileges. If...	Running	Manual (Trig...	Local System
Application Layer Gateway Service	Provides support for 3rd party protocol plug-ins for Internet Connection Sharing		Manual	Local Service
Application Management	Processes installation, removal, and enumeration requests for software deployed through Gr...		Manual	Local System
AppX Deployment Service (AppXSVC)	Provides infrastructure support for deploying Store applications. This service is started on de...		Manual	Local System
ASP.NET State Service	Provides support for out-of-process session states for ASP.NET. If this service is stopped, out...		Manual	Network Service
AssignedAccessManager Service	AssignedAccessManager Service supports kiosk experience in Windows.		Manual (Trig...	Local System
AtherosSvc		Running	Automatic	Local System
Auto Time Zone Updater	Automatically sets the system time zone.		Manual (Trig...	Local Service
AutoCount eDashboard Service	AutoCount eDashboard Service	Running	Automatic	Local System
AutoCount FnB API	AutoCount FnB API - FnB ordering & FnB Price Checker	Running	Automatic	Local System
AutoCount POS API	AutoCount POS API - POS Price Checker	Running	Automatic	Local System
AutoCount Server Service	AutoCount Server Service	Running	Automatic (D...	Local System

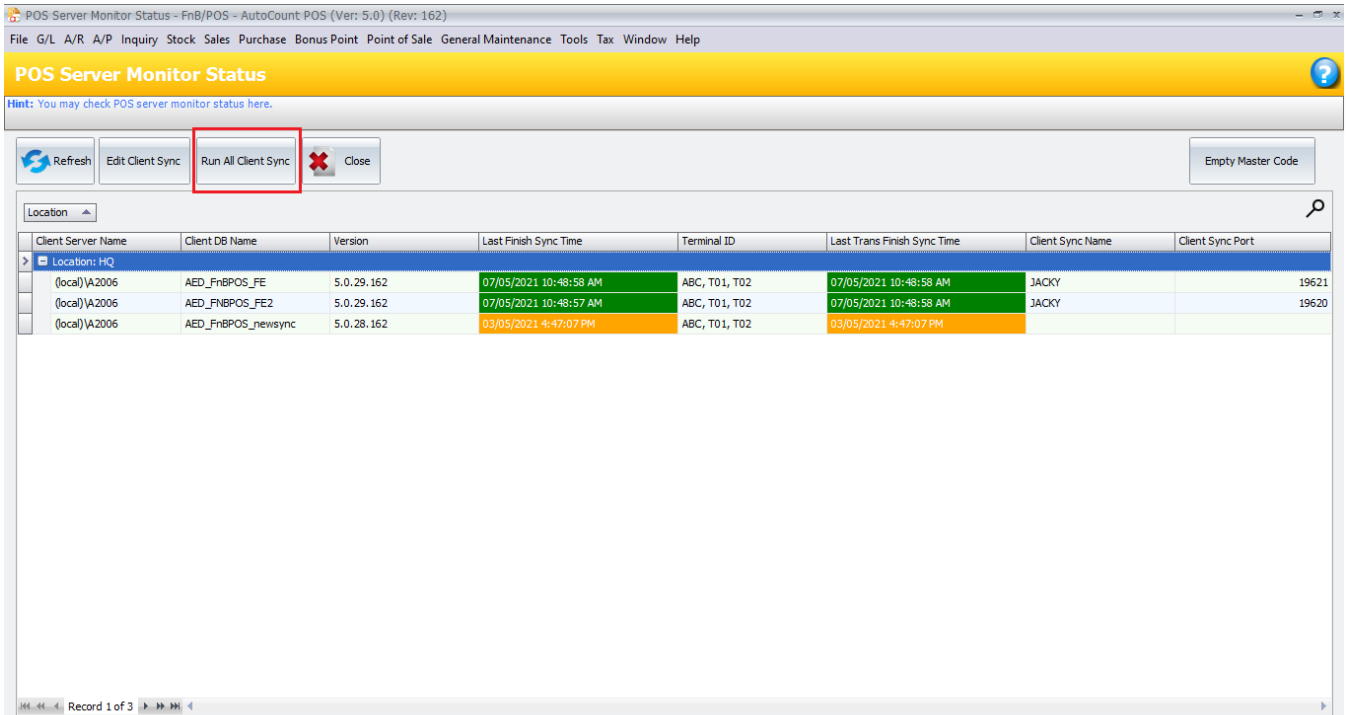
3. Notify user to start services during login if services is not running.

Somehow some pc will not auto start auto sync services which resulted sync is not up to date. With this feature, user do not need to start the services manually anymore.



4. **Server side trigger speed sync.**

User now can trigger speed sync from server. This will ensure you all transaction is up to date before you do your report inquiries.



5. **POS B now can speed sync too.**

Instead of using POS A to manually speed sync, POS B now can do it too. When POS B perform speed sync, it actually triggering POS A to do the sync.