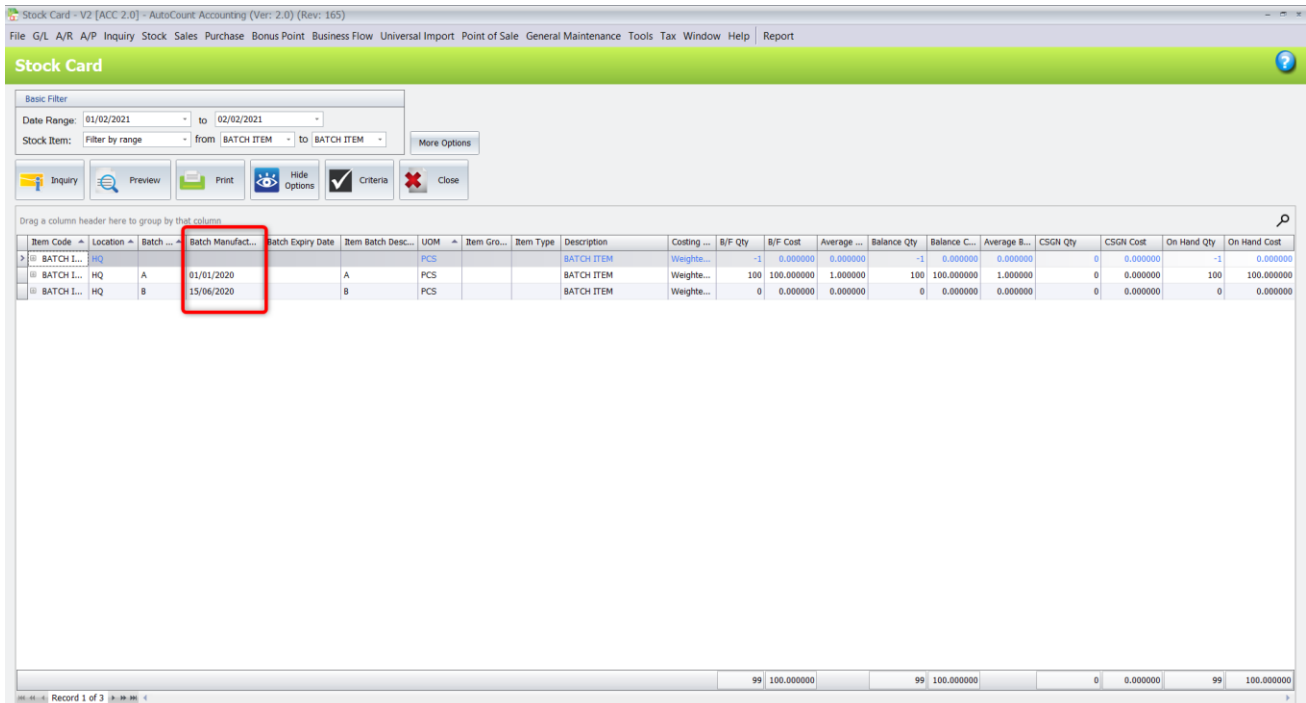


Highlights of Changes in 2.0.19.165

Stock Card to show Batch Manufactured Date

A new field had been added into Stock Card Report to show each and respective Batch’s Manufactured Date. To access Stock Card Report, browse on **Menu → Stock → Stock Card Report**. There will be a new column **“Batch Manufactured Date”** on the grid (Refer Figure 1).



Item Code	Location	Batch	Batch Manufactured Date	Batch Expiry Date	Item Batch Desc...	UOM	Item Gro...	Item Type	Description	Costing...	B/F Qty	B/F Cost	Average ...	Balance Qty	Balance C...	Average B...	CSGN Qty	CSGN Cost	On Hand Qty	On Hand Cost	
BATCH I...	HQ	A	01/01/2020		A	PCS			BATCH ITEM	Weighte...	-1	0.000000	0.000000	-1	0.000000	0.000000	0	0.000000	-1	0.000000	
BATCH I...	HQ	B	15/06/2020		B	PCS			BATCH ITEM	Weighte...	100	100.000000	1.000000	100	100.000000	1.000000	0	0.000000	100	100.000000	
											0	0.000000	0.000000	0	0.000000	0.000000	0	0.000000	0	0.000000	
												99	100.000000		99	100.000000		0	0.000000	99	100.000000

Figure 1

Debtor Top Sales Ranking Widget show Company Name

A minor improvement had been made on the **Debtor Top Sales Ranking Widget** whereby previously it shows the Debtor Code. In this version onwards, it will display the **Debtor's Company Name** instead as user usually recognise by the name instead of code (Refer Figure 2).

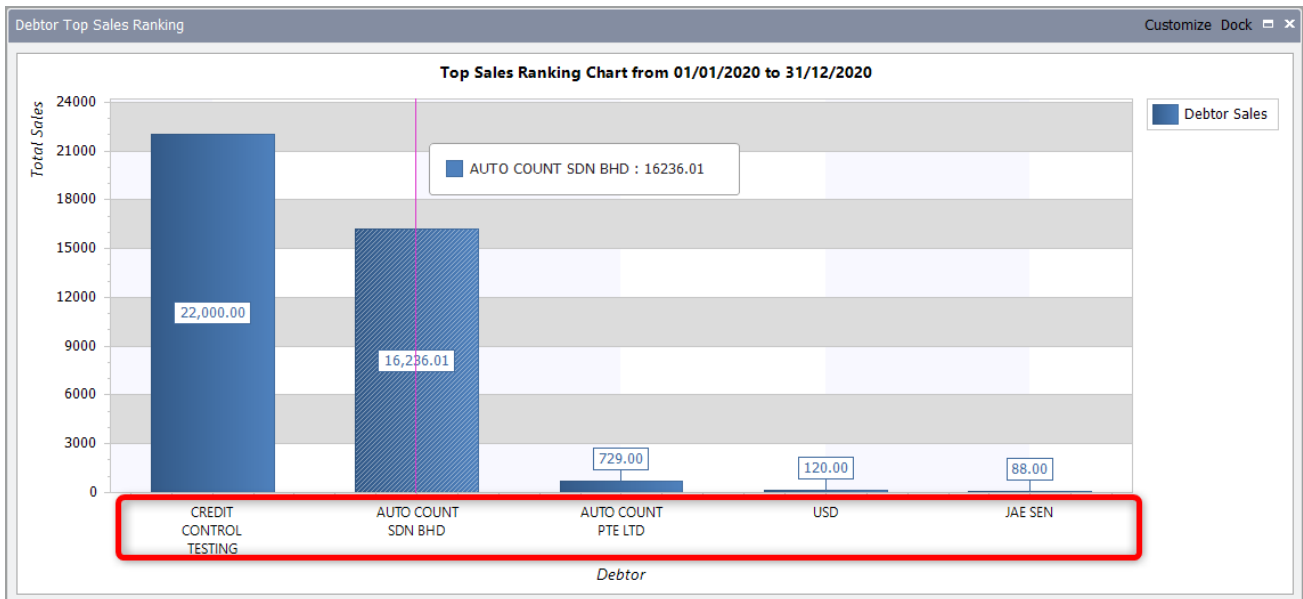


Figure 2

Stock Item Inquiry add “IsActive” column

A new column had been added into the search grid – “IsActive”. This is to show the current item is in an Active or Inactive state. To access Stock Item Inquiry, browse on **Menu → Inquiry → Stock Item Inquiry**. At the stock Item Inquiry screen, access the search grid column chooser to pull the “IsActive” column out if needed (Refer Figure 3).

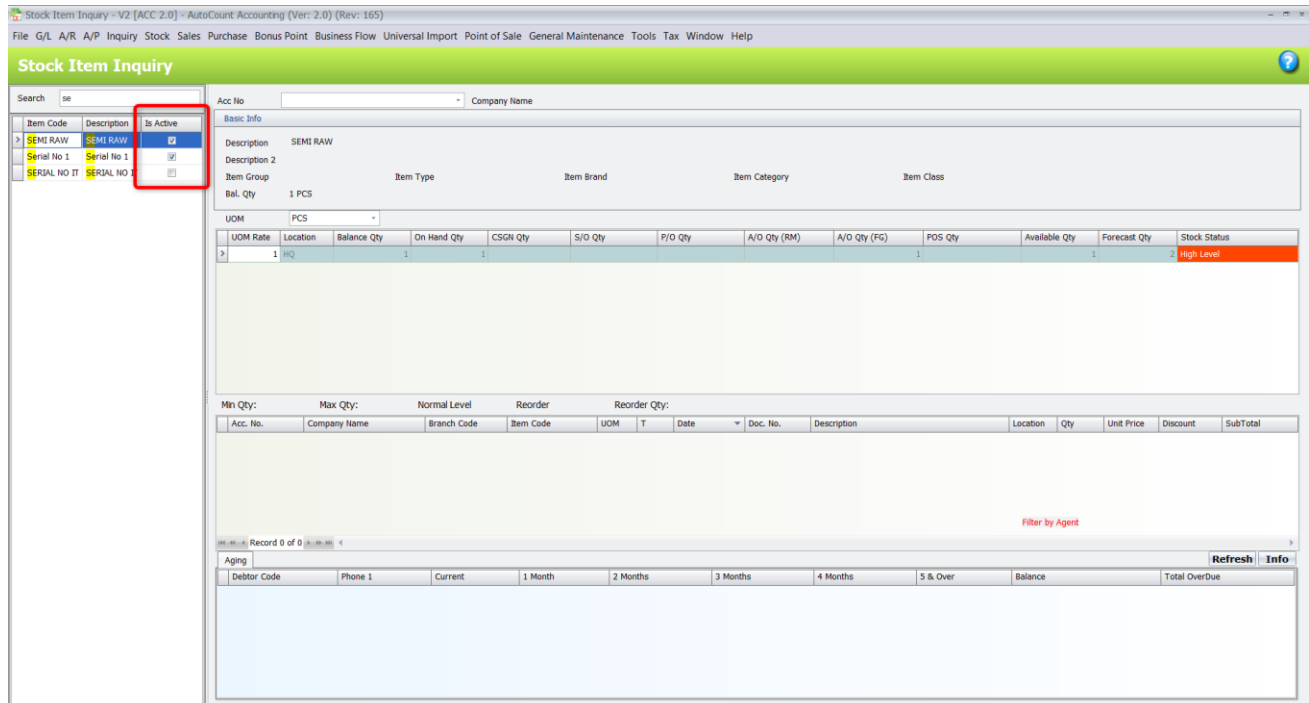


Figure 3

Outstanding Stock Assembly Order Listing to show Master UDF

User can now see any UDFs created for their Stock Assembly Order at Outstanding Stock Assembly Order Listing. To access this report, browse on **Menu → Stock → Stock Assembly Order → Print Listing → Print Outstanding Stock Assembly Order Listing**. User can now inquiry and see any data or value keyed in at Stock Assembly Order in that report (Refer Figure 4 & 5).

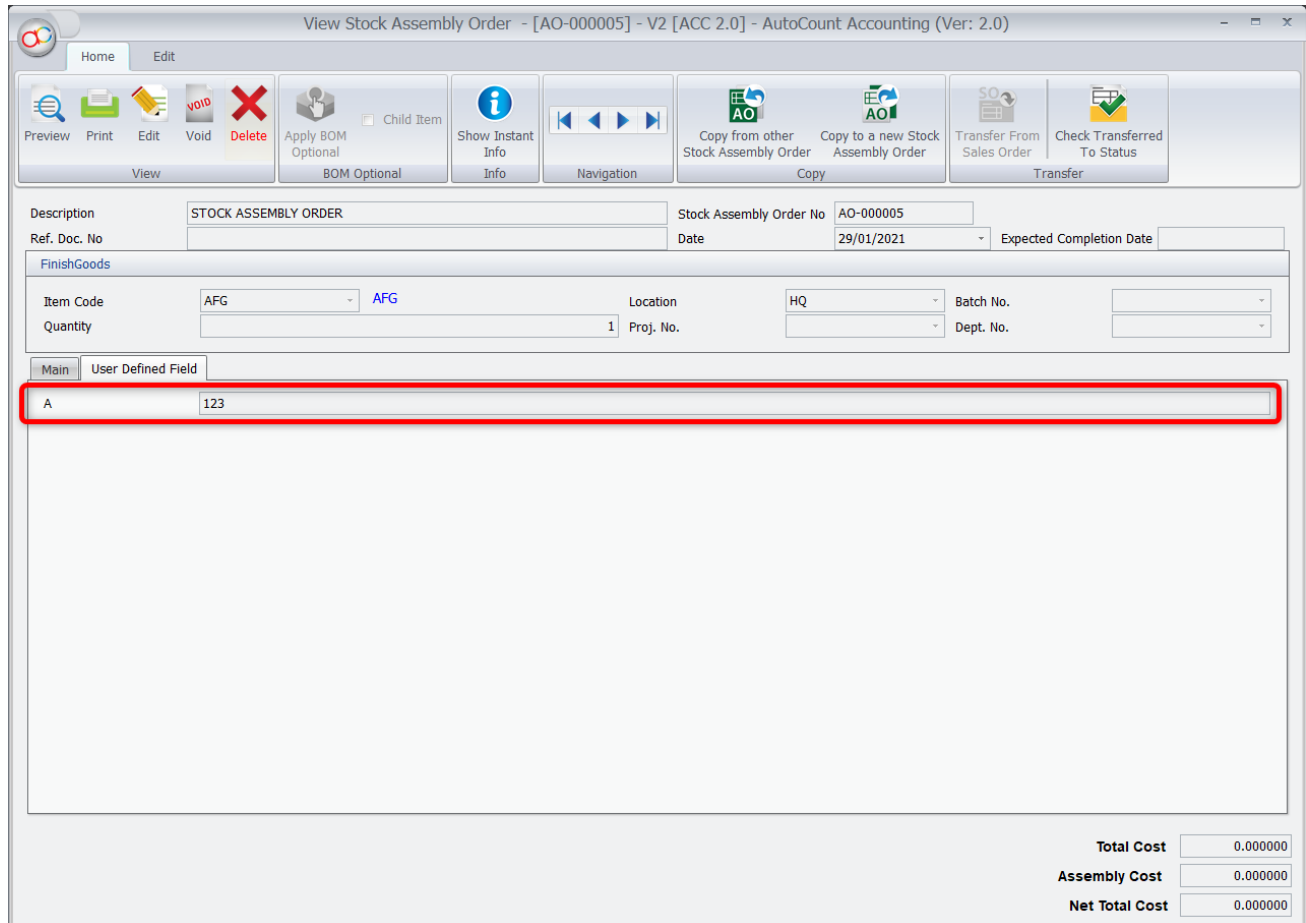


Figure 4

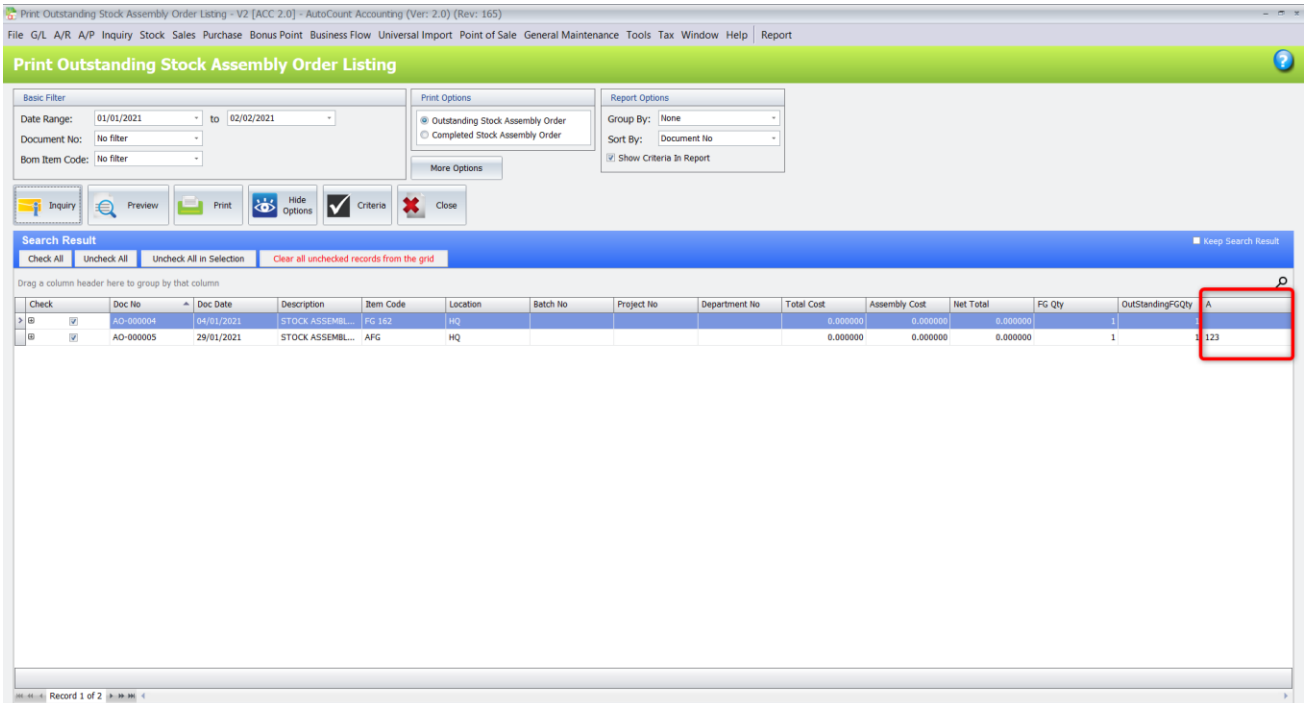


Figure 5

Others

Some other key highlights of this version which does not require further explanation:

1. **Support “Mobile” column in Import by Excel** – User can now import Mobile No. into their Debtor / Creditor through excel.
2. **Remove “Refer To” column from Stock Card Detail at Stock Item Inquiry** – In previous version of AutoCount, this column will display some numbers which is meaningless to the user. These numbers are for backend database use only, so we decided to remove this column to not cause any confusion.
3. **Enhance Stock Assembly Detail Listing and Stock Disassembly Detail Listing inquiry speed** – This version had significantly improved the inquiry speed for the mentioned report. For users that have large amount of data on Stock Assembly or Stock Disassembly, you will notice the result will be generated faster.

Prepared by Jae Sen
Last Modified 04/01/2021